

STOL SERIES 20' (6.1M) HVLS FAN

Technical Specifications	
Model	STOL-2061
Diameter	20 FT / 6.1 Meters
Number of Airfoils	6 STOL Airfoils
Airfoil Finish	Anodized Aluminum
Frame & Mounting Finish	1/4" Black Powder Coated Steel
Wingtip	6 Standard SBF Wingtips (Red)
Installed Weight	280 lb (127 kg)
Maximum Speed	48 RPM
Air Displacement	211,895 CFM / 6,000 CMM
Available Input Power	115 VAC (99-126 VAC) 25A Peak @ 48-62 Hz 1 Phase
	240 VAC (198-264 VAC) 16.8A Peak @ 48-62 Hz 1 Phase
	240 VAC (198-264 VAC) 13.2A Peak @ 48-62 Hz 3 Phase
	480 VAC (342-528 VAC) 7.6A Peak @ 48-62 Hz 3 Phase
	575 VAC (450-660 VAC) 3.7A Peak @ 48-62 Hz 3 Phase
Reducer	Premium Viton double lip output seals, lifetime synthetic oil, robust 1.25" dia. output shaft, lubed for life, painted SB Blue
Nominal Motor Horsepower	1.5 HP (1.12 kW)
Motor RPM	1735 RPM
Speed Controller Options	UltraLite, Yoke, VLD, Touch 'N' Go, AutoPilot, Radar
Controller Connection	10V DC Analog
VFD Enclosure	NEMA1, IP 10 metal enclosure with hinged door. NEMA 4x, IP 66 available
VFD Motor Supply Cable	25 feet / 7.62 Meters
Safety Components	Airfoil Boomerang Brackets (6), Guy Wires (4), Safety Cable (1), Safety Z Brackets (6)
Disconnect Switch	25A lockable
dBA at Max. RPM	< 45 dBA*
Recommended Airfoil Clearance	Horizontal from Wingtips: 36" (0.91 Meters)
	Vertical from Mounting Point: 74" (1.9 Meters)
Extension Bar	1 FT standard, available in 1 FT increments up to 10 FT
Motor Pallet Dimensions/Weight	30.5"x33"x30.5" (0.77 x 0.83 x 0.77 Meters) / 228 lbs (103 kg)
Airfoil Pallet Dimensions/Weight	24"x9'6"x17" (0.60 x 2.89 x 0.43 Meters) / 140 lbs (64 kg)
Certification	ANSI/UL 507
	CAN/CSA C22.2 No. 113-10
	CE, C-Tick

*dBA values were obtained from sound testing at maximum speed in a controlled environment. Actual results may vary.



SKYBLADE® and **SKYBLADE FANS®** are the trademarks of Skyblade Fan Company.

24501 Hoover Road, Warren, MI 48089 USA
 Telephone: 1.586.806.5107; Fax: 1.586.806.5109
 E-Mail: sales@skybladefans.com

STOL SPECIFICATIONS

APPROVALS

- ETL
- CE
- C-Tick

AIRFOILS

- Equipped with 6 airfoils
- Extruded anodized aluminum
- High performance STOL design

GEARBOX

- Precision finished gears for low noise & long service life
- Sealed with lifetime synthetic oil
- Robust 3" output shaft for strength
- Nylon bushing on input

CONSTRUCTION

- Mounting is to be 1/4" powder coated steel
- All construction is to be protected from the elements
- Stainless steel safety brackets

VFD

- NEMA1, IP 10 metal enclosure with hinged door. (NEMA 4x, IP 66 available)
- Factory assembled & programmed
- Minimum start/stop torque loads

WINGTIP FENCE

- Equipped with 6 wingtip fences
- Constructed of nylon 66
- Redirect outward airflow into downward airflow

MOTOR

- Totally enclosed, fan cooled (TEFC)
- IP55 rating
- Class F insulation
- 1.5HP (1.12 kW) nominal horsepower

STANDARD LIMITED WARRANTY

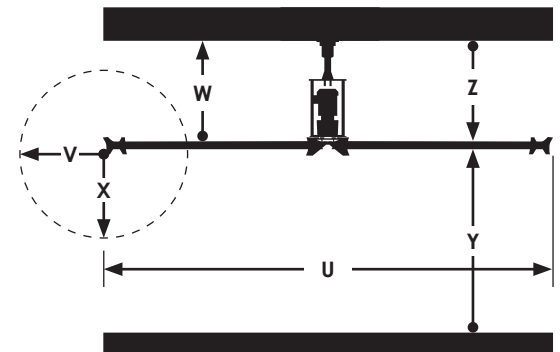
- 3 year: Motor & Reducer
- 1 year: Electronics
- Lifetime: Airfoil
- Extended warranties available.

STOL SERIES SAFETY CLEARANCES & DROP HEIGHT¹

MODEL #	DIAMETER [U]	SIDE [V]	ABOVE [W]	BELOW [X]	MIN. AIRFOIL HEIGHT [Y]	AIRFOIL DROP HEIGHT [Z]
STOL-2061	20 Ft (6.1 m)	36"	39"	36"	10'	51"

¹ All dimensions are based on a standard 1 ft. extension bar.

Safety Clearances & Drop Height



STOL SERIES MAX EFFECTIVE DIAMETER

DISTANCE FROM CENTER	AIR VELOCITY ²	COOLING SENSATION ²
0' - 20' (0-6.1m)	620 - 900 fpm 3 - 4.5 m/s	14 - 15°F 8 - 10°C
21' - 40' (6.2-12.2m)		
41' - 60' (12.3-18.3m)	340 - 620 fpm 1.7 - 3 m/s	9 - 15°F 5 - 8°C
61' - 80' (18.4-24.4m)		
81' - 100' (24.5-30.5m)	0 - 340 fpm 0 - 1.7 m/s	0 - 9°F 0 - 5°C
101' - 120' (30.6-36.6m)		

² Stated values are estimations based on standard installation at maximum power. Values such as building layout, obstructions, ceiling height, and drop ceiling height may effect these numbers.

